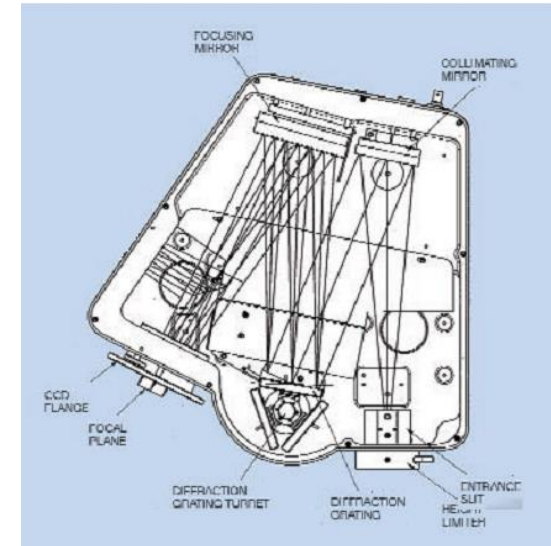
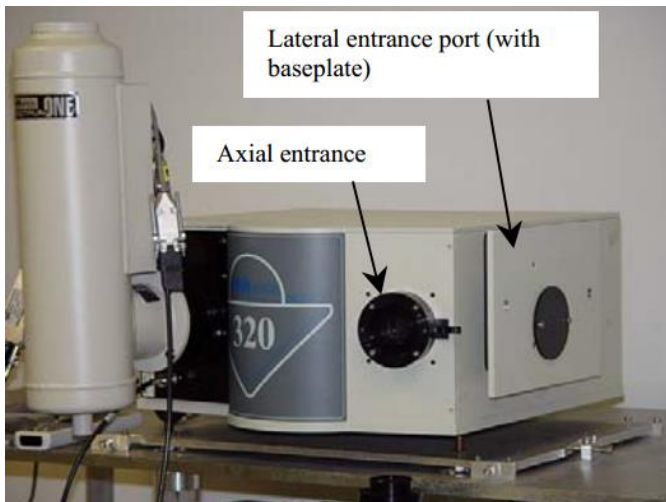


Atik 11000 on Triax 320

Components

Monochromator Jobin yvon Triax320

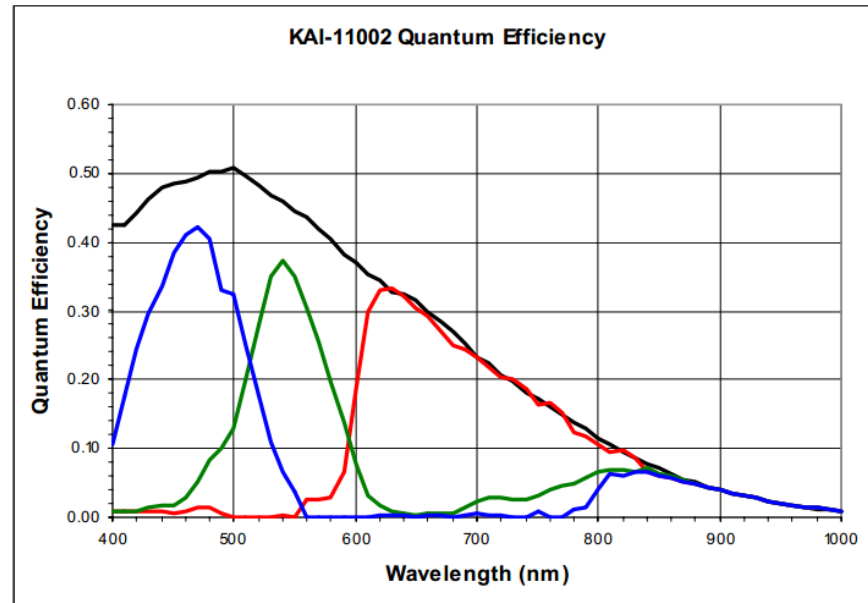


Technical characteristics

Focal length:	0,32 metri
Aperture:	f/4,1
Scan range:	0-1400 nm
Focal plane:	30 mm di larghezza x 12 di altezza
Position accuracy:	+/- 0,3 nm
Repetibility:	+/- 0,06 nm

CCD sensor

Sensor Kodak-KAI 11002



Pixels number:

4032x2688 pixel

Pixel dimensions:

9 um x 9 um

Sensor dimensions:

37,25 mm x 25,7 mm

Saturation signal:

60000 electrons

Quantum efficiency:

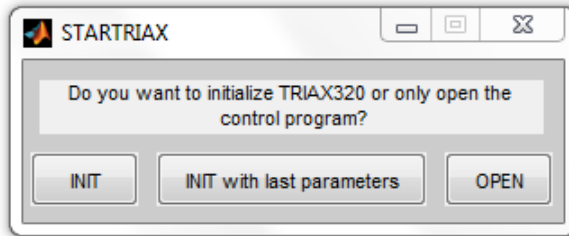
50% a 500 nm

CCD camera



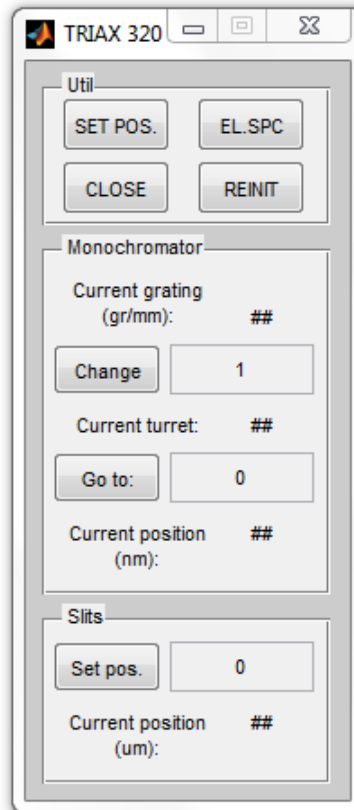
	Atik 11000
Sensor Type	Kodak Kai-11002
Horizontal Resolution	4008 pixels
Vertical Resolution	2672 pixels
Pixel Size	9x9 μ m
→ ADC	16 bit
→ Readout Noise (typical)	13 e ⁻
Interface	USB 2.0
Power	12v DC 2A (max)
→ Maximum Exposure	Unlimited
Minimum Exposure	1/1000 s
Maximum QE	50%
Anti blooming	>1000x
Full Well	60.000e
→ Cooling	Thermoelectric, 2 stage Liquid ready
Weight	Approx. 990 g
Backfocus distance	17mm
Optical window thickness	4mm

Software: Triax320

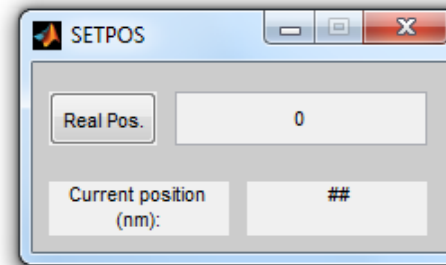


Start Menu

Main Program



Correct grating position (in nm)



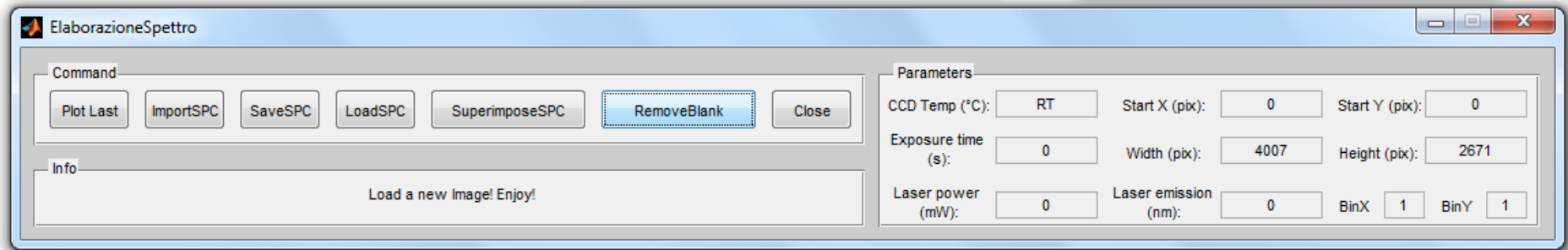
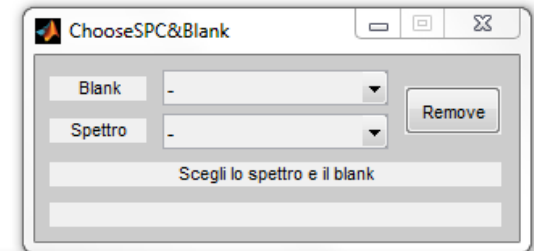
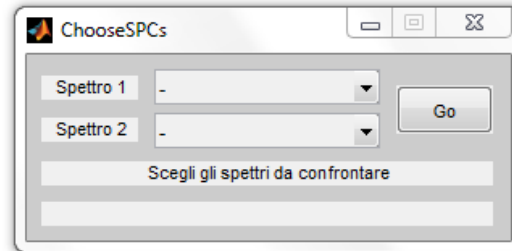
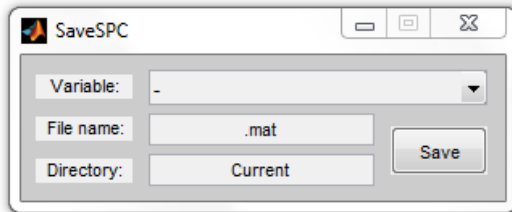
Software: Images to Spectra

Software elaborazione immagini in ambiente MATLAB

Save spectra window

Spectra superimpose window

Remove blank window



Main program: el_spec

Main program: acquisition parameters